

TR50 Series

TR50P, TR50PSS, TR50XTP, TR50XTPSS

Turf, ground cover, planting beds, slopes
Radius: 30'–52'
Flow rate: 0.80–10.20 GPM
Pressure: 30–70 psi

Application: These rotors fit both residential and light commercial applications. The adjustment is not only simple, but provides setting accuracy, leaving little need for fine-tuning.

Specifications

Radius:

TR50P, TR50PSS, :	30'–52' (9,2–15,2m)
TR50XT, TR50XTPSS:	20'–47' (6,0–14,3m)

Flow rate:

TR50P, TR50XT:	0.80–10.20 GPM (3,1–46,3 LPM)
TR50PSS, TR50XTPSS:	1.0–9.80 GPM (3,6–44,5 LPM)

Nozzle data:

See page 34–35

Recommended operating pressure range:

30–70 psi (2,0–4,5 Bar)

Maximum operating pressure:

75 psi (5,2 Bar)

Inlet:

¾" (20mm) female-threaded
¾" and ½" (13 and 20mm) female-threaded (shrub only)

Below-grade installation:

½" (13mm) (except shrub models)

Dimensions (lawn pop-up model):

Pop-up to center of nozzle: 4¾" (120mm)
Base diameter: 2¾" (60mm)
Height: 8" (200mm)

Models:

Shrub
Lawn pop-up: 5" (127mm)
High-pop: 12" (305mm)

Check valve (Standard):

Reversible check valve prevents low-head drainage, keeping laterals charged with water (maintains up to 6' (1,9m) elevation change on all models)



Operational Features (All Models)

- Simple to set watering pattern with adjusting band—the arc on the TR50 is factory pre-set to 180°, if that's not the arc you need, just turn the easy-to-adjust black band (see illustrations on pg. 33)
- Full 5" pop-up to clear tall grasses
- Smart Arc™ memory returns sprinkler to previously set arc if vandalized and slip clutch assures no damage to gears
- Below-grade installation allows for maximum safety helping to eliminate the potential for liability
- TruArc for easy arc set—eliminates the need to double check—for ease in installation and to eliminate the palming of a sprinkler to check the final arc setting
- Effluent and check valve options—for safety in reclaimed water situations and to prevent low-head drainage

- Unique, over-molded wiper seal for greater debris resistance and below-grade installation
- Cluster, water-lubricated, gear-drive design
- Standard rubber cover for safety
- Large filter screen to prevent clogging
- Five-year warranty

Installation Features (All Models)

- Color-coded nozzle tree with eight interchangeable nozzles
- Factory-installed with a #3.0 nozzle
- Arc adjustment from 30°–360°
- Continuous, unidirectional rotation provides uniform water coverage when set at 360°
- Stainless steel radius adjustment screw allows up to 25% radius reduction

Specifying Information—TR50, TR50SS

Description	Body	Nozzles		Optional
TR50—TR50 Series Rotor	P—Lawn Pop-up SS—Stainless Steel Lawn Pop-up S—Shrub HP—High-pop	10—1.0 15—1.5 20—2.0 30—3.0	45—4.5 60—6.0 75—7.5 90—9.0	E—Effluent

Example: A 12" high-pop TR50 Series sprinkler with a 9.0 nozzle, would be specified as: **TR50-HP-90**



Nozzle Tree for all models shown.

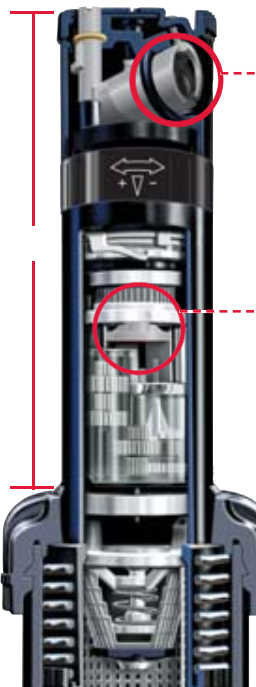
NEW
Stainless
Steel Models

TR50XTP and TR50XTPSS

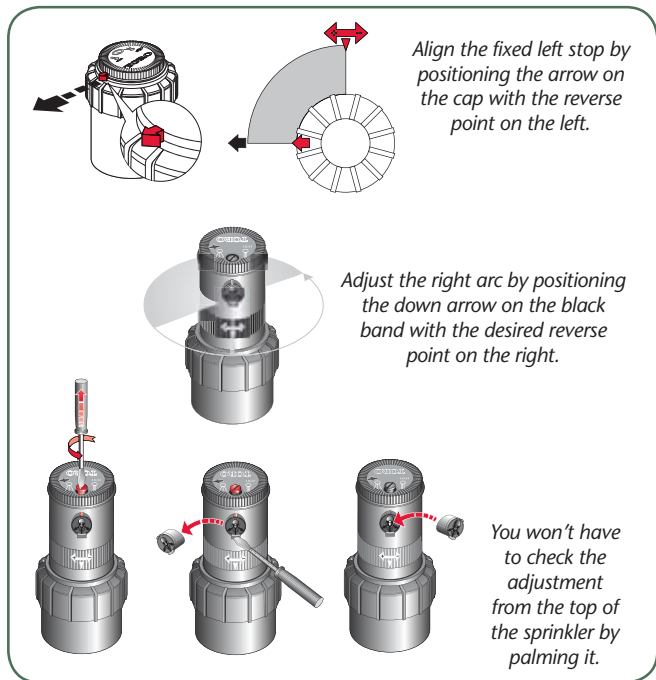
These rotors have all the features of the TR50P with the addition of the exclusive X-Flow® device and TruJectory™ nozzle adjustment feature.

Additional Features (XTP Models Only)

- Patented X-Flow® shutoff device built into the riser to turn off sprinkler flow allowing for maintenance or partial installations
- Exclusive TruJectory™ adjustment from 5° to 25° for fine-tuning nozzle spray trajectory to avoid low-hanging branches or compensate for the wind



X	T
The X-Flow® shuts off the spray while the system is running. It allows individual sprinkler shutoff for dry nozzle changes or maintenance.	TruJectory™ is included for making trajectory adjustments from 5° to 25° to compensate for wind, low-hanging branches or throwing water onto slopes.



Specifying Information—TR50XT, TR50XTSS

TR50XT XX XX E

Description	Body	Nozzles		Optional
TR50XT—TR50XT Series Rotor	P—Lawn Pop-up SS—Stainless Steel Lawn Pop-up S—Shrub HP—High-pop	10—1.0 15—1.5 20—2.0 30—3.0	45—4.5 60—6.0 75—7.5 90—9.0	E—Effluent

Example: A TR50XT Series sprinkler with a stainless steel riser and a 6.0 nozzle, would be specified as: TR50XT-SS-60

Aquadesign International AB
Box 740, 182 17 DANDERYD
Tel: 08-720 61 50, Fax: 08-720 61 60
E-mail: info@aquadesign.se
Hemsida: www.aquadesign.se